

Method for the collection, preservation, transport and filtration of stools intended for subsequent parasitological analysis.

Description of the technique

Uranotest Copro is a rapid, hygienic, practical and safe system for collecting, preserving, transporting and filtering stools from both pets and farm animals for subsequent parasitological examination. The system has been designed to achieve an extremely clean sediment free from fats and impurities, due to the incorporation of a 266 micron filter system which enables a concentration of parasite eggs and therefore simpler and better viewing during microscopic examination of the stool.

Uranotest Copro significantly reduces the time and costs of stool diagnosis, avoids the need to store stools in the refrigerator and minimises odour by reducing the handling of the stools.

Materials supplied

- 1 - Bottles for collection of stools, contained in an individual cardboard box. In addition to the plastic container bottle, each box contains 3 plastic scoops for the pet owner to collect the stools.
- 2 - Leaflet with instructions for use
- 3 - A bottle of Lugol stain.

Precautions

- 1 - For veterinary use only.
- 2 - For optimum results, adhere strictly to the instructions for use.
- 3 - Do not collect any type of sample other than stools.
- 4 - Keep out of reach of children.
- 5 - Avoid contact of the contents of the bottle with the skin and mucous membranes.
- 6 - Do not discard the sample directly into the toilet.
- 7 - Do not use once the expiry date has been passed.
- 8 - The stool samples contained in the plastic container should be considered as potentially dangerous.

Preservation and stability

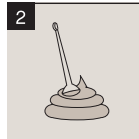
Uranotest Copro should be kept at a temperature of between 15° C and 30° C. Under these conditions its stability can be guaranteed until the expiry date marked on the box. It is important not to expose it to direct sunlight.

Instructions for use

1 - Instructions for the collection of stools by the pet owner.



Open the bottle carefully to avoid spilling the liquid.



Collect 2 measures with the aid of the plastic scoop enclosed, using the side of the cone in the case of solid stools or the side of the spoon in case of diarrhoea. If the veterinarian asks for the stools to be collected for three consecutive days, collect one measure each day, instead of two. Use a different plastic scoop for each day.

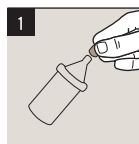


Dissolve the stool with the aid of the scoop and shaking the sample from the bottom of the bottle until it is well diluted.

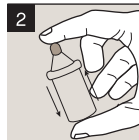


Close the bottle firmly and take to the veterinarian. The stool sample can be stored for a maximum of 15 days before taking to the veterinarian. For your convenience and hygiene, it is not necessary to keep the sample in the refrigerator.

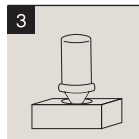
2 - Instructions for performing the microscopic examination of stools by the veterinarian



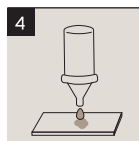
Remove the sealing cap. Shake and press slightly to release the gases accumulated inside. Replace the sealing cap, keeping the collecting vessel pressed. This procedure will prevent liquid from escaping.



Shake the bottle until a homogeneous solution is obtained, and then open it again.



Place the bottle in the hole reserved for this purpose in the product's box with the tube facing downwards. Leave to settle for 15 minutes.



After 15 minutes, remove the bottle, open it carefully and discard the first drop of the sample. Deposit one drop on a microscope slide. For better viewing, a single drop of Lugol stain can be added next to the drop of sample and the sample can be mixed with the help of a cover slip. Examine under a microscope.